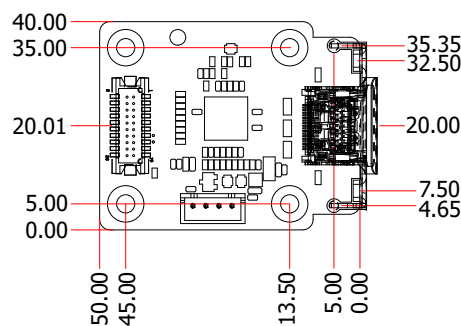


KEY FEATURES

CHIP	PI3HDX1204B
PORTS	Input: DP In 2x10p DP In Key A (Optional) Output: HDMI connector
INTERFACE	1 HDMI
DIMENSIONS	50 x 40 mm
APPLIED MODEL	ADS101/ADS103, RPS101/RPS103, RPSPIC

MECHANICAL DRAWING



SPECIFICATION

CHIP	Re-Driver PI3HDX1204B
FEATURES	Support Full HD resolution up to 1920x1080
REAR PANEL I/O	1 HDMI port
APPLIED MODEL	ADS101/ADS103, RPS101/RPS103, RPSPIC
TEMPERATURE	Operating: -20°C to 70°C Storage: -40°C to 85°C
HUMIDITY	5% to 90%
DIMENSIONS	50mm x 40mm (1.97" x 1.58")

ORDERING INFORMATION

Model Name	Part Number	Description
EXT-HDMI	770-DP2HDM2-000G	EXT-HDMI: DP-to-HDMI 1.4 MODULE CARD R.B

OPTIONAL ITEMS

Model Name	Part Number	Description
HDMI-Bracket	A31-028957-050G	BRACKET IO SLOT, SGCC T=1.0mm, FOR EXT-HDMI(LC)RoHS

